

Scales for Alto Saxophone

Moving Through the Circle of Fifths by Adding Flats

Created by Ken Dahlin

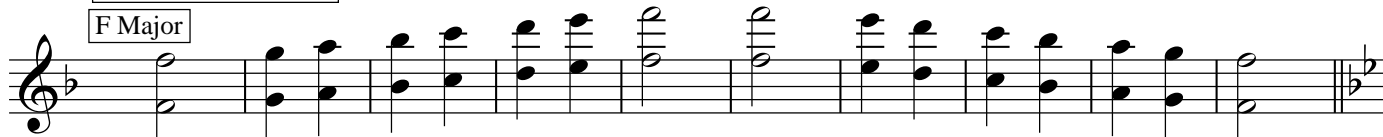
Concert E Flat Major

C Major



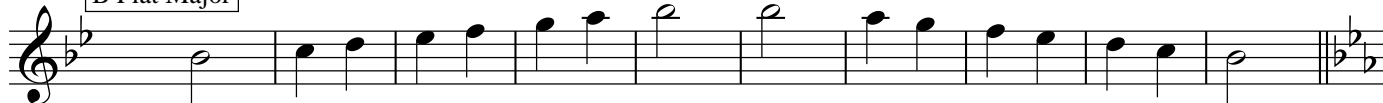
Concert A Flat Major

F Major



Concert D Flat (Enharmonic to C Sharp Major)

B Flat Major



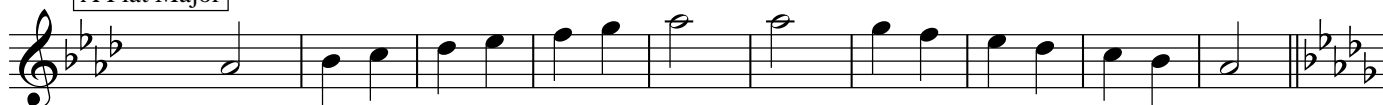
Concert G Flat Major (Enharmonic to F Sharp Major)

E Flat Major



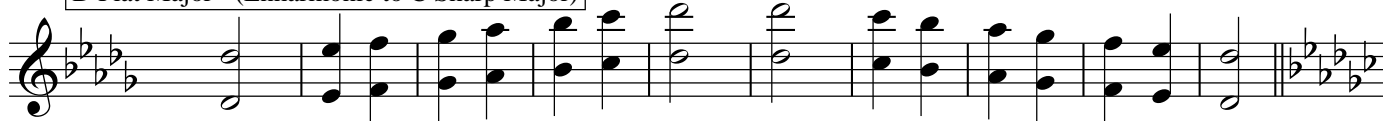
Concert C Flat Major (Enharmonic to B Major)

A Flat Major



Concert E Major is enharmonic to an F Flat. (It is not practical to consider F Flat as a major key.)

D Flat Major - (Enharmonic to C Sharp Major)



Concert A Major is enharmonic to an B Double Flat. (It is not practical to consider B Double Flat as a major key.)

G Flat Major - (Enharmonic to F Sharp Major)



Concert D Major is enharmonic to a E Double Flat. (It is not practical to consider E Double Flat as a major key.)

C Flat Major - Enharmonic to B Major - 5 Sharps



Scales for Alto Saxophone

Moving Through the Circle of Fifths by Adding Sharps

Created by Ken Dahlin

Concert E Flat Major

C Major



Concert B Flat Major

G Major



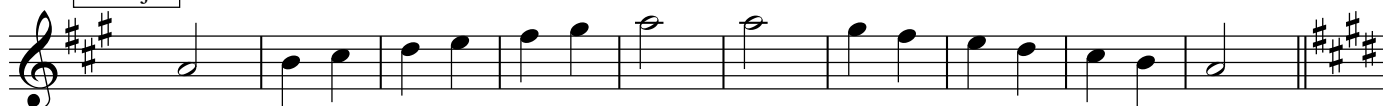
Concert F Major

D Major



Concert C Major

A Major



Concert G Major

E Major



Concert D Major

B Major - Enharmonic to C Flat Major



Concert A Major

F# Major - Enharmonic to G Flat Major



Concert E Major

C Sharp Major - Enharmonic to D Flat Major

